

Sage 300 People

Release Notes

Kenya Statutory Report

Update

August 2025

Sage

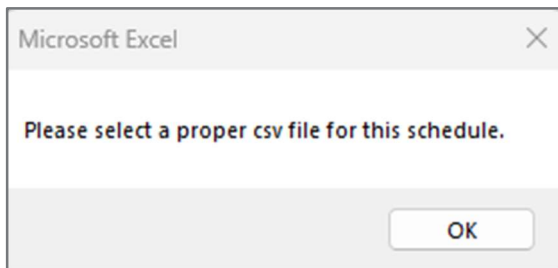
Table of Contents

1.0	Simplified P10 Return Fringe Benefit CSV File Format Correction	3
2.0	Update Kenya Statutory Changes	4

1.0 Simplified P10 Return Fringe Benefit CSV File Format Correction

Issue:

When importing the D_FBT_Dtls.csv into the Simplified PAYE Return template, an error was returned indicating that the CSV file format is invalid.



Resolution:

The error was caused by three trailing comma-separators at the end of each transaction in the D_FBT_Dtls.csv file. The report has been updated to remove these invalid separators.

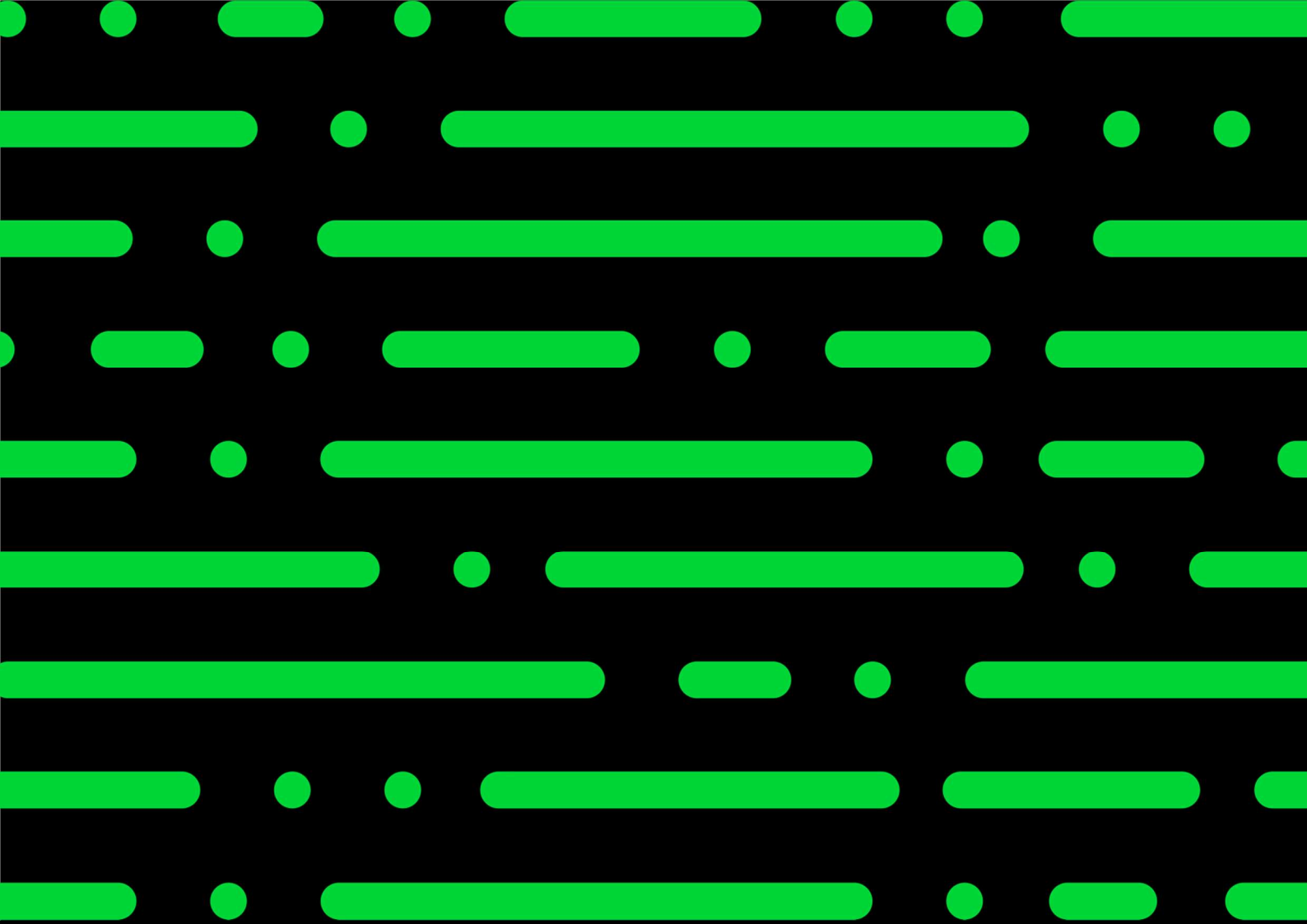
2.0 Update Kenya Statutory Changes

Import the updated Kenya Generic Tax file to update the Simplified P10 Return.

Note:

Before importing the updated KEN-GenericTax.xml file please ensure that the Sage 300 People application is updated to at least version 25.1.3.0

The file must be imported before doing any payroll processing, printing payslips or reports or making any payments. Do a recalculation of all Kenya Company Rules.



[sage.com](https://www.sage.com)

Sage